

Aberfoyle

# Hub News

R-7 School

2020  
TERM 3  
Week 8



## this issue

From the Principal **P.1**

Bully Audit, PAT Testing, Library News **P.2**

Parent Survey, Dental for Schools, Canteen News

Diary Dates, Of interest **P.3**

## Reminder

Last day of Term 3:  
Friday, September 25<sup>th</sup>  
EARLY 2:30pm Dismissal

Please Note:

The last day of term is also  
a CASUAL DAY: Crazy Day  
(gold coin donation)



## Special Event

Sports Day: Week 9  
Thursday, September 17<sup>th</sup>



(Staff and students only)

Back-up Sports Day  
(if the weather is inclement)  
Thursday, September 24<sup>th</sup>

## Advanced Notice:

Pupil Free Day  
Term 4 — Week 3  
Friday, October 30<sup>th</sup>



[facebook.com/AberfoyleHubR7school](https://facebook.com/AberfoyleHubR7school)

Principal:

**Tas Ktenidis**

Deputy Principal:

**Sarah Magnusson**



Government of South Australia  
Department for Education

## From the Principal

### Planning for 2021

Planning for the new school year has now begun. Our initial process involves looking at school enrolment numbers and what our class combinations will possibly be for next year. Determining class structures is dependant on a number of factors such as student learning and social needs, student numbers, funding and staffing. All the above mentioned points contribute to and help assist staff in planning what the new school year will look like.

If you are planning to enrol your child and have not done so as of yet or you know of families who are looking for a school to enrol in, encourage them to come and visit us. Make sure you complete your enrolments as soon as possible and hand them in.

Information about transition and any requests for next year will soon be forwarded to the greater school community.

### External Review 2020

This coming Monday 14<sup>th</sup> and Tuesday 15<sup>th</sup> of September, we will be working through an External Review. I have mentioned this in previous editions of the school newsletter. The review process is quite thorough. It involves data analysis of school learning outcomes, a school presentation of what we have been doing, interviewing staff, students and parents. From the panel's findings, recommendations are made which help assist us as a school to continually find ways to improve teacher practice and programs that we offer at school.

Governing Council meeting for next week has been moved to Monday night to cater

for the External Review. I am looking forward to working with all community members during the process.

### Growth Mind Set

*"It's kind of fun to do the impossible."*— Walt Disney

Walt Disney is famous for saying in an interview "It's kind of fun doing the impossible".

Learning is a journey of fun. It allows us to make things, work through things and meet future challenges that were not possible to do 10 or 20 years ago. Learning and developing skill sets allows us to do the impossible.

Our children are now about to embark on being able to design and print objects that are 3D. Through such inspiring activities, children's imaginations are sparked. Greater ideas and inventions are born.

I was reading in one of our local newspapers the other day about a 3D metal printer being set up in the northern suburbs in Adelaide. While reading this, my thoughts went to all the possible items one can make that will ultimately in time, become quite cheap to make. Wheel chair parts, car parts, items for the home. The opportunities can be quite endless.

We are in an age where it is quite fun to do the impossible.

**Tas Ktenidis**  
Principal

Relationships • Responsibility • Resilience • Respect

## ACER PAT TESTING

A reminder that currently and until the end of the term all Year 1-7's will be completing online PAT testing in both Reading and Maths and Year 3-7's testing in Science and Vocabulary. The tests are online and will occur daily before recess. All students are required to complete PAT tests. They are part of the data collection process that schools use to help monitor progress of students to inform teaching and learning. PAT testing in literacy and numeracy occurs in all Department for Education schools between Weeks 7 and 10 of Term 3 each year. Please contact your child's class teacher, Tas Ktenidis or Sarah Magnusson should you have any questions.



## BULLY AUDIT: Term 3

### Dealing with Bullying in our Schools

During Week 9 of this term we will be conducting our second Bullying Audit with all Reception to Year 7 classes. We are committed to creating a supportive environment free from bullying, harassment and violence. Your child will be participating by completing the Bully Audit Form online. Information that the students provide will be collated and conversations will be had by class teachers and leadership with any students who are identified by their peers through this process. Discussions will focus on what needs to improve/change to support positive behavior. You will be contacted if your child has been identified through this process and a meeting arranged where applicable.

Data collected from these audits will help inform and improve our practice to keep the Hub a safe place for everyone.

**Sarah Magnusson**  
Deputy Principal

## REMINDER: DENTAL FOR SCHOOLS

### Catch-up Visit — Friday, September 18<sup>th</sup>

## PARENT/CARER ENGAGEMENT SURVEY

The new parent/carer engagement survey is now live and will be open for 3 weeks. You will be sent a reminder email or SMS before the survey closes on September 25<sup>th</sup>. The survey has been specifically designed to gauge how you engage with your children's learning.

Parents/carer can find more information at [www.education.sa.gov.au/parentsurvey](http://www.education.sa.gov.au/parentsurvey).

We encourage all families to participate in the school survey via our unique link [https://educationsa.syd1.qualtrics.com/jfe/form/SV\\_eJ3AXNw9lsJQcdL?RID=CGC\\_E3rIIRkbyJB3urD&Q\\_CHL=email](https://educationsa.syd1.qualtrics.com/jfe/form/SV_eJ3AXNw9lsJQcdL?RID=CGC_E3rIIRkbyJB3urD&Q_CHL=email)

**Sarah Magnusson**  
Deputy Principal



## CANTEEN News

### Sports Day Special

Sports Day lunch order forms have gone out via classes. If you did not receive one, please come and get one from the Canteen.

The special comprises a sausage and bread + 250ml fruit juice (\$4). Extra sausages are \$2 each.



\*\*\*\*\*

Please note:  
**NO OTHER lunch orders** will be available on Sports Day.

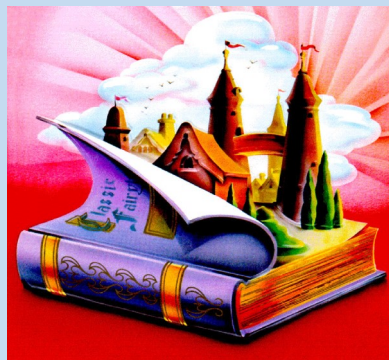
Trish Brewer & Andrea Thain  
Canteen Managers

## LIBRARY News

### Premier's Reading Challenge Closed

Just a reminder that the PRC closed on Tuesday, September 1<sup>st</sup> and we are no longer receiving student reading forms.

Debbie, Julie & Maz  
Library Staff



## DIARY DATES: SEPTEMBER / OCTOBER



14/9	External Review R-7 Bully Audit Week starts; Governing Council Meeting 6pm (Staff Room)
15/9	External Review
16/9	JP Box Construction Day
17/9	Sports Day (**Staff and students only)
23/9	Wheels Day; Choir excursion
25/9	Last day of Term 3 - <b>early 2:30pm dismissal; Casual Day (gold coin)</b>
12/10	First Day of Term 4

## Of Interest

### DYSLEXIA SA:

#### Fun Phonics Fact 19: The Schwa

The schwa is tricky to teach kids and most adults don't know of its existence even though it's the most common vowel in the English language! We've previously mentioned syllable stress. In most two syllable words the first syllable is normally stressed and is pronounced clearly and correctly. In order to speak quickly, the vowel in the unstressed syllable (usually the second) is often pronounced as a schwa. So what is a schwa sound? Open your mouth a little, don't move your tongue or your mouth and just make a sound – it's a mix of 'uh' and 'er'. Imagine the sound you make if someone pokes you in the ribs and you just let out some air. That's a schwa – it's an unstressed vowel. The symbol for a schwa sound in the dictionary is an upside-down lowercase e. If you see this symbol 'ə' under the word in the dictionary you know that vowel will schwa. The schwa often causes the most problems in spelling as you cannot hear the actual vowel sound to encode the word. This is where dictionaries and spell checkers come in very useful for kids. Rules for schwa:

1. If the vowel in the second syllable is closed and is A or O, it will change to a schwa e.g. blos/som (the last syllable sounds like "sum" due to schwa), mel/on (sounds like mel/un), pi/lot (sounds like pi/ut), tex/as (sounds like tex/us).
2. If a multi-syllable word ends in any vowel followed by an L it will schwa e.g. pen/cil (sounds like pen/sul), e/qual (sounds like e/quul), can/cel (sounds like can/sul).
3. Open A that is not stressed will change to schwa in any syllable e.g. plas/ma (sounds like plas/muh), a/dopt (sounds like uh/dopt), a/go (sounds like uh/go) com/ma (sounds like com/muh).
4. 3 syllable words with an open I or E in the second syllable will schwa (there's a slight variation here as some suggest that the I or E will say its short vowel sound even though it's an open syllable, but with the Aussie accent it sounds more like a schwa). Words like con/fi/dent which, according to syllable division rules should say their long vowel sound in the open middle syllable, say their short vowel (or a schwa sound) e.g. fam/i/ly, hospi/tal, an/i/mal, en/e/my, el/e/gant, cin/e/ma. These rules aren't finite, but are most common -schwa can turn up in the oddest of places!

## HELP OUR SCHOOL WIN A COMMUNITY GARDEN!



### Our school is competing in the Colgate Community Garden Challenge!

The schools that collect the most oral care waste and online votes can win a recycled community garden set!

Vote for us online and track our school's ranking at:

[www.terracycle.com/colgategardenvoting-au](http://www.terracycle.com/colgategardenvoting-au)

For full terms and conditions, visit [www.terracycle.com/colgategarden-au](http://www.terracycle.com/colgategarden-au).  
If you have any further questions, call TerraCycle on 1800 983 324

Authorised under NSW Permit No LTPS/20/42075, SA No T20/184 and ACT Permit No TP20/00201

We collect any brand of used:



ABERFOYLE HUB R-7 SCHOOL  
29 Jeanette Crescent,  
Aberfoyle Park SA 5159

Phone: 8270 5055 Fax: 8370 5763  
Email: [dl.0536.info@schools.sa.edu.au](mailto:dl.0536.info@schools.sa.edu.au)  
Website: [www.ahs.sa.edu.au](http://www.ahs.sa.edu.au)