



# HUB NEWS

Aberfoyle Hub Primary School Parent and Caregiver Newsletter

RELATIONSHIPS RESPONSIBILITY RESILIENCE RESPECT



## WHAT'S INSIDE THIS ISSUE:

- From the Principal - page 1**
- From the Deputy Principal - page 2**
- Save the Date - page 2**
- School Fees, general reminders - page 3**
- SAPSASA News - page 4**
- Music News - page 5**
- HUB News - page 6**
- OSHC News - page 7**



## From the Principal

by Tas Ktenidis

### Thank you School Community

Thank you to all of our community for the supportive manner in which we have begun the new school year. I realise that it is not easy for our children with many home schooling. As we head towards week 3, I am sure all students are looking forward to returning to school and joining their peers in class.

Once all students do return in week 3, there will be a number of measures that we will all have to follow to keep each other safe. By working together, I am very confident that we will successfully get through the current wave of Omicron.

- Due to the school being a high-density site, when entering grounds please make sure to QR code.
- Please make sure you are wearing a mask when coming onto school grounds. For those of you who have medical exemptions please inform the school.
- No adults are to enter any class buildings.
- Please drop off and pick up your child/ren as soon as possible.
- Please make sure to social distance.
- Reminder for some of our new families, please do not drive and park in staff car park. During the morning and afternoon, students do use the main gates. This places our children at risk as cars attempt to come in and out of the school.
- If your child/ren show any symptoms of being ill, do not send them to school. Make sure to have them tested for COVID.

- If we do have any positive cases, the school will follow set guidelines as per the Department for Education.
- Further COVID updates will be sent out.

Please do not hesitate to contact the school if you do have any queries.

### AGM and Open Night

Traditionally we have held Governing Council AGM and Open night during Wednesday week three. Due to current restrictions this will not be possible. We will seek to hold Governing Council AGM via Webex during week 3. We are hopeful that many of you will be happy to hook up through a Webex link, which will allow our AGM to proceed. Further information will be shared about the AGM with links sent out via skoolbag and Dojo. A proposed replacement date for Open night will be shared as soon as possible. At this point, under the advice from the Department for Education, we should be able to hold events from week 5 onwards. Further details will be forwarded to the school community in reference to Open night.

### School Camps

In an effort to re-align school camps due to COVID impact last year, we did book camps for this term. Due to Omicron, we have had to cancel all camps for this term. Staff have worked in the background investigating options for the replacement of camps. Further updates will be forwarded to the school community via class teachers as the term progresses.

Regards

Tas Ktenidis  
Principal



## FEBRUARY/MARCH

**GOVERNING COUNCIL/AGM,  
WEDNESDAY 16TH FEBRUARY  
6PM - OPEN TO THE COMMUNITY**

**PUBLIC HOLIDAY: ADELAIDE CUP,  
MONDAY 14TH MARCH, WEEK 7**

**PUPIL FREE DAY, TUESDAY 15TH  
MARCH, WEEK 7**

**HARMONY WEEK - MARCH 21-25,  
WEEK 8**

**PARENT INTERVIEWS  
TUESDAY 28/3/22 - 02/04/22,  
WEEKS 9 & 10**

**LAST DAY OF TERM - EARLY  
DISMISSAL 2:30PM, THURSDAY  
14TH APRIL**

**PUBLIC HOLIDAY: GOOD FRIDAY,  
FRIDAY 15TH APRIL, WEEK 11**

**FIRST DAY OF TERM 2 2022 -  
MONDAY 2ND MAY.**

## From the desk of the Deputy Principal

by Sarah Magnusson



### Kiss 'n' Drop Zone and Emu Crossing

Our designated 'Kiss and Drop' zone is located at the front of the school. It is important that this space is used for drop off and pick up only. Please refrain from parking there as the area tends to become a bottle-neck of cars, that at times double park, increasing the risks to children trying to walk amongst cars. Please adhere to the correct road rules.

Our Emu crossing is also located at the front of our school. It has white road markings, red and white posts and operates only when the children's crossing flags are displayed. Most importantly a speed limit of 25 km/h applies to all drivers when children are present. Drivers must stop for pedestrians using or about to use our Emu crossing.

Please help keep our students, your children, safe by driving at the appropriate speed near our school.



### Out of School Sports

Both Basketball and Cricket season now have a delayed start due to the unexpected start to the school year.

Player Membership forms for Out of School Sports (Basketball, Cricket, Netball, Soccer and Pedal Prix) are available from the Front Office for any new families with eligible students who are interested in any of the above sports. These forms are due back next Wednesday 16th February.

Further details re Basketball and Cricket will be sent out soon.

### Non Department Service Providers

Forms are now available from Front Office for families to access their Occupational or Speech Therapists during school hours.

Due to the popularity of this service we ask that parents/caregivers limit their requests to one service provider per family. This will allow a more equitable system with families able to access service providers on site from Monday 21st February.

Any queries please contact Sarah Magnusson,  
Deputy Principal



# general reminders

## Student Belongings

Please ensure all belongings are clearly labelled with your child's name (including their surname).

## Mobile Phones

Mobile phones are required to be handed to teachers at the beginning of the day and collected before leaving to go home. Devices need to be turned off or set onto flight mode to ensure Smart-watches cannot receive data throughout the school day. Once students enter the school grounds mobile phones are not to be used - if students need to contact you they are to come to the Front Office or if you need to contact your child you may call the Front Office and we will get the information to your child.

## Medications

Student medications are to be dropped off to the Front Office with completed paperwork. All medications must be in their original packaging with a pharmacy label attached, including your child's name and the dosage required.

## Change of details

Please advise the Front Office of any change of address or contact details (including emergency contacts).

## Absences

The Front Office can be notified of any student absences by phoning 8270 5055 or sending a text to 0428 910 895



## SCHOOL FEES

### Materials and Service Charge

Tax Invoices for the 2022 Materials and Services Charge will be distributed to families (via class teachers to students ) next week. The package includes an invoice, an information letter and an agreement form for payment by instalments. Payments by instalments form is optional for those who prefer to pay in smaller amounts. Please contact us if you do not receive the package from your child or if you'd like to speak to us regarding payment plans/difficulties.

Families who still have outstanding fees for 2021 will soon receive soon a Final Notice. The fees are legally recoverable and will be forward to the Dept. for Education Debt Recovery Unit.

Please note: A new school card application must be submitted every year.

### School Card Online Facility

2022 School Card applications can be submitted online using the link below or paper copies are available from Front Office. School Card information is available at:

<http://www.sa.gov.au/topics/education-and-learning/financial-help-scholarships-and-grants/school-card-scheme> .

Income eligibility limits for school card approval can be found in the 2022 information letter/invoice or via the above link.

Chris Godden  
Business Manager





# SAPSASA NEWS

FROM BRAD WALTERS

## **SOUTHERN VALLEY SAPSASA FACEBOOK PAGE**

**Aberfoyle Hub Primary School is a part of the SOUTHERN VALLEY SAPSASA District. SAPSASA – Primary School Sport, provides students with opportunities to compete in their chosen sport by representing their school, the District or their State.**

**STUDENTS WHO ARE IN YEARS 5 AND 6 HAVE OPPORTUNITIES TO COMPETE IN ALL COMMON SPORTS. THERE ARE ALSO OPPORTUNITIES FOR ALL STUDENTS BORN IN 2012 AND OLDER TO COMPETE IN SWIMMING, CROSS COUNTRY AND ATHLETICS EVENTS.**

**All information for the District is distributed to students through your school SAPSASA representative (Brad Walters) and will also be posted on our Facebook Page (Southern Valley SAPSASA DISTRICT) If you would like to keep up to date with all Southern Valley SAPSASA information, please click on "JOIN GROUP". If you have any questions, please contact me at [jonathan.grant806@schools.sa.edu.au](mailto:jonathan.grant806@schools.sa.edu.au)**

**Jonathan Grant  
Southern Valley District Convenor  
Braeview School R-7**

## **SLIP, SLOP, SLAP SEEK AND SLIDE**



**Term 1 is summer time!**

**Effective shade can help protect you from UV radiation, but you need to be careful as UV can still reach you in surprising ways. A Hat is best protection.**

**Remember hats are compulsory for students to wear when outside this term.**

**Aberfoyle Hub Primary School, is a Sunsmart school.**

# MUSIC NEWS

FROM HELEN NICHOLAS

## **Instrumental Music Tuition beginning from week 5, Term 1 2022**

Aberfoyle Hub School gives year 3 - 6 students an opportunity to learn a musical instrument, taught on a weekly basis during class time, either through, Instrumental Music (IMS) or private providers.

Our team of private providers for Keyboard, Guitar and Drums charge an excellent rate and payments are made directly to them. Parents/Caregivers will need to arrange instrument hire and purchase of music, with advice from the music tutor. The school does not arrange or take responsibility for private hiring for independent private providers.

Instrumental music tuition forms for 2022 will be available from class teachers and the front office from week 3, term 1.

Completed New Instrumental Tuition enrolment forms need to be returned by the end of week 5 to the front office, so they can be forwarded to the appropriate tutor who will liaise directly with students from week 5 onwards of term 1 (As long as COVID regulations don't change!). Additional Request for Music Tuition forms will be available at the front office for the remainder of the year. Continuing students will be advised of lesson times and location where instruction will take place by their tutor from week 3 onwards.

Violin, Cello & Viola (strings) lessons with an IMS teacher are free of charge.

All lessons require an instrument at home to practise on. Parents can hire direct from Size Music, You can check their website for details - <https://size.com.au/hire/personal-hire/> Size Music do a good deal for students. Just go to "Personal Hire" on the top of their web page and click for pricing and details.

### **Expectations and Responsibilities**

- It is an expectation that when taking up an instrument, students will continue lessons for at least one year to judge progress and enjoyment.
- Participation will not cease without prior consultation with the instrumental music teacher and the school.
- Students are expected to practice at home 3-6 times a week (15-30 mins each), and keep a record in their music diary. Students are expected to perform an item at our end of the year MUSIC SHOWCASE in November. Dates will be advised at the beginning of Term 4.

Should you wish to contact any of the private providers regarding options for instrumental lessons, they are happy to answer your queries.

**Keyboard & Drums - Sam Liguoro: 0409 692 944**

**Guitar - Alison Hansen: 0419 825 517**

**Violin, Viola & Cello - Kirsty Friebe: 0413 136 235**

Helen Nicholas  
PERFORMING ARTS TEACHER

Endorsed by Tas Ktenidis  
PRINCIPAL



# HUB NEWS

Aberfoyle Hub Primary School

Welcome everyone to 2022!  
Our first six days at  
Aberfoyle Hub Primary School.



**RELATIONSHIPS  
RESPONSIBILITY  
RESILIENCE  
RESPECT**

# OSHC NEWS

From Sam Tuff the OSHC Director

Welcome back to all our families. We are excited to have all our new children and their families joining our OSHC family.....

Please Note our service can now accommodate any Year 7 children that require before and after school care .

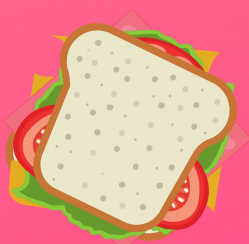
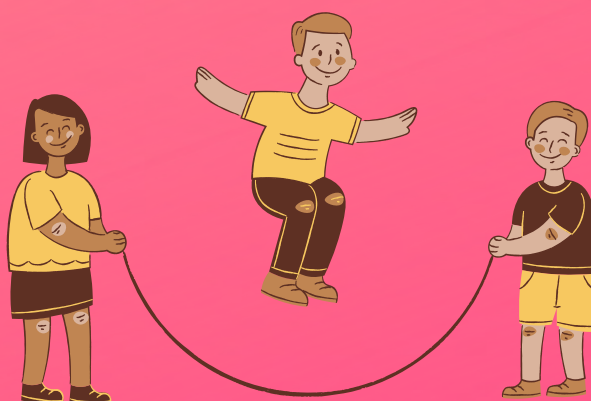
On a sad note we would like to farewell two of our wonderful staff members, Knick Britten and Kate Parsons, we wish them all best in their future endeavors, they will be greatly missed.

We also welcome some new OSHC staff who OSHC will introduce in future newsletters.

After a successful , fun and very busy Vacation Care its now time to ask all families to return a new 2022 registration form with active bookings included.

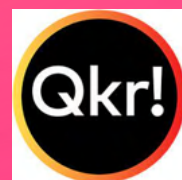
All existing 2021 Advisory Committee members are invited to join the OSHC advisory meeting via Teams on Tuesday 15/02/22 @ 6.30pm.

Thank you  
Sam Tuff



## Reminder

The Hub Grub Canteen will be open from Monday 14th February!



**Aberfoyle Hub Primary School**

29 JEANETTE CRESCENT, ABERFOYLE PARK SA 5159

[www.ahs@schools.sa.edu.au](http://www.ahs@schools.sa.edu.au)  
[dl.0536.info@schools.sa.edu.au](mailto:dl.0536.info@schools.sa.edu.au)

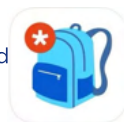


Government of South Australia  
Department for Education



Follow us on Facebook  
[facebook.com/AberfoyleHubR7school](https://facebook.com/AberfoyleHubR7school)

Receive school notices and  
Newsletter on Skoolbag



Connect with the classroom on  
**class dojo**