



HUB NEWS

Aberfoyle Hub Primary School Parent and Caregiver Newsletter

RELATIONSHIPS RESPONSIBILITY RESILIENCE RESPECT



WHAT'S INSIDE THIS ISSUE:

From the Principal - page 1
From the Deputy Principal - page 2
Save the Date - page 2
School Fees, general reminders - page 3
Music News - page 4
OSHC News - page 5



From the Principal

by Tas Ktenidis

Primary Playground Rules

Aberfoyle Hub is very fortunate to have large and wonderful grounds for our students. One of the unique features of our school is that we can provide during break times safe areas to play in for various age groups. For example, we have two Playground areas. One is set aside for Receptions to Year 2 and the second for Year 3 to Year 6.

By having two designated play areas, it does allow the school to protect younger students from older students. In the moment of playing, physical activity can result in students possibly being accidentally bumped; contact occurring which can result in bigger bodied students hurting younger students.

During lesson times teachers will on occasion, as part of their physical class activity use the Playground that is designated for older students during break times. This option is opened to all classes at the discretion of the class teacher.

COVID Reminder

Thank you to all the Parent/ Caregivers who have been supportive of the school in trying to minimise any opportunity of COVID spreading in our school community. One of the reasons why we have been very fortunate to not have COVID at Aberfoyle Hub, has been due to all of us following and supporting the measures we have in place. We have been one of the very few schools that have allowed our greater school community to have access to school grounds for instance, which is the result of everyone's great work.

Supporting our children and helping them to make safe choices, requires us to lead and set a positive example.

New Class

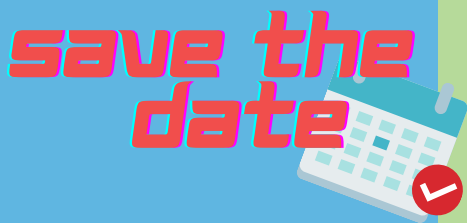
It has been very pleasing to see our school grow and we have had an increase of new enrolments. The growth in enrolments has led to a high number of our classes reaching capacity. As a result we have now created a 10th class in the school. This will be a Year 3/4 class and I am pleased to share that we also have a new class teacher.

Mrs Kim McLean is a highly experienced teacher who has taught over the years at various schools around the southern area with great success. Mrs McLean has a Special education background but has also had great success in differentiating and extending student learning in mainstream classes. The new class will begin from week 5 onwards and will be based in Unit 5, Room 22. The two year 3/4 classes will have the opportunity to work together and will also work closely with the year 4/5 class.

Canteen

A quick reminder that the canteen has been opened since the return of all students to the school. The canteen does use the QKR app, which allows you to see the menu, price list and enable you to place orders for lunch and for recess if you wish. QKR makes it ideal as you can pay for orders online and not worry about your child/ren losing any money.

Regards
Tas Ktenidis
Principal



MARCH / APRIL

PUBLIC HOLIDAY: ADELAIDE CUP, MONDAY 14TH MARCH, WEEK 7

PUPIL FREE DAY, TUESDAY 15TH MARCH, WEEK 7

HARMONY WEEK - MARCH 21-25, WEEK 8

PARENT INTERVIEWS TUESDAY 28/3/22 - 02/04/22, WEEKS 9 & 10

LAST DAY OF TERM - EARLY DISMISSAL 2:30PM, THURSDAY 14TH APRIL

PUBLIC HOLIDAY: GOOD FRIDAY, FRIDAY 15TH APRIL, WEEK 11

FIRST DAY OF TERM 2 2022 - MONDAY 2ND MAY.

From the desk of the Deputy Principal

by Sarah Magnusson



SCHOOL SPORT NEWS

Cricket Update

Term 4 start

Thanks to those who have registered an interest in cricket, however we do not have enough to field a team, nor anyone to coach. Therefore the cricket season will commence in Term 4. Fees will be adjusted accordingly. Invoices will be sent home mid term 3.

It is hopeful that training can commence second half of this term pending on availability of a Coach.
NO COACH = NO TEAM = UNHAPPY STUDENTS.

Basketball Update

COVID has seen a delayed start to the season. Invoices will be sent out end of this week.

Part payment will be accepted so that students can begin their season.

Remember No pay = No Play.

Interested in a Sport?

To ensure the longevity of school sports, we are accepting new membership forms for all sports – Basketball, Cricket, Netball, Soccer, Pedal Prix.

Please direct any queries to either Sarah at the school Ph: 82705055 or the below sports coordinators:

Cricket Coordinator: Aaron Kilpatrick Mob: 0414 651 220

Basketball Coordinator: Sue Ann Woodwiss Mob: 0412 846 196

Soccer Coordinator: Scott Fallowfield Mob; 0419 040 264

Pedal Prix Coordinators: Brad Walters Ph; 8270 5055 school and Adam Stone Mob; 0416 065 678

HAPPY TWOSDAY!

Some of the staff were seen wearing Tutu's on Tuesday to celebrate the 22nd February because we won't see this sequence again .



general reminders

Student Belongings

Please ensure all belongings are clearly labelled with your child's name (including their surname).

Mobile Phones

Mobile phones are required to be handed to teachers at the beginning of the day and collected before leaving to go home. Devices need to be turned off or set onto flight mode to ensure Smart-watches cannot receive data throughout the school day. Once students enter the school grounds mobile phones are not to be used - if students need to contact you they are to come to the Front Office or if you need to contact your child you may call the Front Office and we will get the information to your child.

Medications

Student medications are to be dropped off to the Front Office with completed paperwork. All medications must be in their original packaging with a pharmacy label attached, including your child's name and the dosage required.

Change of details

Please advise the Front Office of any change of address or contact details (including emergency contacts).

Absences

The Front Office can be notified of any student absences by phoning 8270 5055 or sending a text to 0428 910 895



SCHOOL FEES



Materials and Service Charge

Tax Invoices for the 2022 Materials and Services Charge have been distributed to families (via class teachers to students). The package includes an invoice, an information letter and an agreement form for payment by instalments. Payments by instalments form is optional for those who prefer to pay in smaller amounts. Please contact us if you do not receive the package from your child or if you'd like to speak to us regarding payment plans/difficulties.

Families who still have outstanding fees for 2021 will soon receive soon a Final Notice. The fees are legally recoverable and will be forward to the Dept. for Education Debt Recovery Unit.

Please note: A new school card application must be submitted every year.

School Card Online Facility

2022 School Card applications can be submitted online using the link below or paper copies are available from Front Office. School Card information is available at:

<http://www.sa.gov.au/topics/education-and-learning/financial-help-scholarships-and-grants/school-card-scheme> .

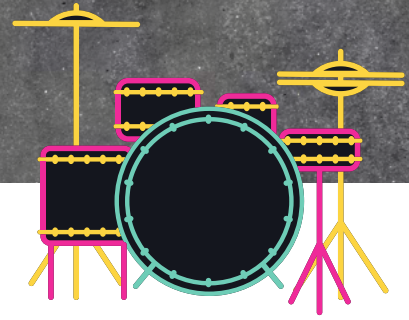
Income eligibility limits for school card approval can be found in the 2022 information letter/invoice or via the above link.

Chris Godden
Business Manager



Music News

With Helen Nicholas



Instrumental Music Tuition beginning from week 5, Term 1 2022

Aberfoyle Hub School gives year 3 - 6 students an opportunity to learn a musical instrument, taught on a weekly basis during class time, either through, Instrumental Music (IMS) or private providers.

Our team of private providers for Keyboard, Guitar and Drums charge an excellent rate and payments are made directly to them. Parents/Caregivers will need to arrange instrument hire and purchase of music, with advice from the music tutor. The school does not arrange or take responsibility for private hiring for independent private providers.

Instrumental music tuition forms for 2022 will be available from class teachers and the front office from week 3, term 1.

Completed New Instrumental Tuition enrolment forms need to be returned by the end of week 5 to the front office, so they can be forwarded to the appropriate tutor who will liaise directly with students from week 5 onwards of term 1 (As long as COVID regulations don't change!). Additional Request for Music Tuition forms will be available at the front office for the remainder of the year. Continuing students will be advised of lesson times and location where instruction will take place by their tutor from week 3 onwards.

Violin, Cello & Viola (strings) lessons with an IMS teacher are free of charge.

All lessons require an instrument at home to practise on. Parents can hire direct from Size Music. You can check their website for details - <https://size.com.au/hire/personal-hire/> Size Music do a good deal for students. Just go to "Personal Hire" on the top of their web page and click for pricing and details.

Expectations and Responsibilities

- It is an expectation that when taking up an instrument, students will continue lessons for at least one year to judge progress and enjoyment.
- Participation will not cease without prior consultation with the instrumental music teacher and the school.
- Students are expected to practice at home 3-6 times a week (15-30 mins each), and keep a record in their music diary. Students are expected to perform an item at our end of the year MUSIC SHOWCASE in November. Dates will be advised at the beginning of Term 4.

Should you wish to contact any of the private providers regarding options for instrumental lessons, they are happy to answer your queries.

Keyboard & Drums - Sam Liguoro: 0409 692 944

Guitar - Alison Hansen: 0419 825 517

Violin, Viola & Cello - Kirsty Friebe: 0413 136 235

Helen Nicholas
PERFORMING ARTS TEACHER

Endorsed by Tas Ktenidis
PRINCIPAL



**RELATIONSHIPS
RESPONSIBILITY
RESILIENCE
RESPECT**



OSHC NEWS

From Sam Tuff the OSHC Director



**OSHC PUPIL FREE DAY
VISIT TO LOCAL COMMUNITY OP SHOPS**

TUESDAY THE 15TH OF MARCH

**DONATIONS CAN BE PUT IN THE BOX AT OSHC BEFORE FRIDAY
THE 11TH OF MARCH.**

PLEASE COME JOIN OSHC FOR A FUN WALK TO OUR LOCAL SALVATION ARMY AND NU4U OP SHOPS. YOU WILL NEED TO BRING YOUR HAT, RECESS, LUNCH AND DRINK BOTTLE. WE WILL BE TAKING DONATION ITEMS AND SHOPPING FOR SPECIAL BARGAINS FOR OSHC. SPENDING MONEY OF \$5-\$10 IS OPTIONAL. CONTACT OSHC STAFF TO SECURE YOUR BOOKING BY MONDAY THE 7TH OF MARCH .

**MOBILE PH: 0401 161 644
OR EMAIL: DL.0536.OSHC@SCHOOLS.SA.EDU.AU
PLEASE NOTE THERE IS A PERMISSION FORM TO BE SIGNED AND RETURNED TO OSHC. A MINIMUM OF 15 BOOKINGS IS REQUIRED FOR OSHC TO BE OPEN.**



Aberfoyle Hub Primary School

29 JEANETTE CRESCENT, ABERFOYLE PARK SA 5159

www.ahs@schools.sa.edu.au
dl.0536.info@schools.sa.edu.au

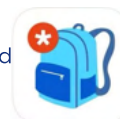


Government of South Australia
Department for Education



Follow us on Facebook
facebook.com/AberfoyleHubR7school

Receive school notices and
Newsletter on Skoolbag



Connect with the classroom on
class dojo