



HUB NEWS

Aberfoyle Hub Primary School Parent and Caregiver Newsletter

RELATIONSHIPS RESPONSIBILITY RESILIENCE RESPECT



WHAT'S INSIDE THIS ISSUE:

From the Principal-page 1 -2
From the Deputy Principal - page 3
Save the Date- page 2
General reminder - page 3
Community News- page 4



From the Principal

by Sarah Magnusson

Dear Parents/Caregivers,

Welcome back to staff, students and families. During 2024 I am sure we will have many memorable times together as a community; many in/excursions, Pedal Prix, Choir, SAPSASA, Instrumental Music, Out of Hours Sports, SRC activities, fundraising events, and much, much more!

We have started the year with 9 mainstream classes and 2 Small Classes.

We welcome the following teaching staff and ancillary staff who have joined the Hub for 2024.

- Lisa Prevett Rm 5 - Teacher 1;1
- Penny Evans Rm 17 - Teacher
- Katie Colbert Rm 16 - Teacher
- Rachael Thompson -SSO
- Paige Dineen -SSO

We look forward to sharing your child's learning journey throughout 2024.

Students starting at the Hub in 2024

We extend a warm welcome to all of our new students and their families.

Welcome to our Reception students -

Rm 6 Zoey C, John O, Archer S, Julian W
Rm 14 Adrian F, Alexander H, Layla H, Georgia K, Olivia L, Evie M, Luna R, Ariyah S, Sonny S, Isabella W
Rm 16 - Iylah D, Willow H, Livvy M, Amali R, Sonny R, Mannat S, Blair S, Eden S, Nina S, Arjan S, Avery S, Ella S, Lucas Y

Welcome students to the following classes -

Rm 1 - Elena F, Logan T
Rm 21 - Queenzy H
Rm 2 - Beatrix K, Alessandro F, Luke T, Mae S
Rm 5 - Akeela R
Rm 19 - Jaeger K, Casey R

We hope that you enjoy your time here with us at the Hub.

SCHOOL/HOME COMMUNICATION

Your child's learning is important to us. Please keep messages to your child be kept to a minimum during the school day. Urgent messages are to be received to the Front Office before 2.30pm. This will ensure the message will be delivered before the end of day. We value the strong partnership between families and home. Please be mindful that Teachers are busy teaching your students during the day. They will respond to you.

Open Night/AGM

Next Wednesday 14th February 5.30pm onwards our school is open for families to meet our staff, see your children's classrooms and their learning spaces.

Please refer to invitation sent out via EdSmart email notification acknowledging your attendance and if you would like to join us for pizza whilst hearing announcements from us in the courtyard before our AGM starts at 7pm. Our AGM is open to everyone and is a great opportunity to hear the highlights of last year.

We hope to see you there.

Assemblies Term 1

We meet every fortnight Friday mornings in the Hall. Everyone welcome. Schedule also available on Class Dojo.

Week 2 Friday 9th February Host SRC Exec

Week 4 Friday 23rd February Host R9; Sharing R14/R2

Week 6 Friday 8th March Host R17; Sharing R16/19

Week 8 Theme Harmony Day -Host SRC Exec; Sharing R1

Week 10 Host R14; Sharing R9/18

save the date



FEBRUARY/ MARCH/APRIL

MONDAY 12TH - 15TH FEBRUARY
R-YR4 SWIMMING, WEEK 3

FRIDAY 16TH FEBRUARY
PUPIL FREE DAY, WEEK 3

TUESDAY 5TH MARCH
TENNIS DAY ROOM 17 & 18, WEEK 6

MONDAY 11TH MARCH
ADELAIDE CUP DAY - **PUBLIC HOLIDAY**,
WEEK 7

THURSDAY 28TH MARCH
YR 5/6 AQUATICS, WEEK 9

FRIDAY 29TH MARCH
GOOD FRIDAY - **PUBLIC HOLIDAY**
WEEK 9

MONDAY 1ST APRIL
EASTER MONDAY - **PUBLIC HOLIDAY**
WEEK 10

FRIDAY 12TH APRIL
END TERM - LAST DAY SCHOOL EARLY
DISMISSAL 2.30PM, WEEK 11

Absences

The Front Office can be notified of any student absences by phoning 8270 5055 or sending a text to 0428 910 895



continued from the Principal



Pupil Free Day

A reminder next week Friday 16th February the Hub will be closed for staff training.

OSHC will be open. Please contact the staff for bookings.

PARKING / KISS'N'DROP-OFF ZONES

The safety of our students is always of paramount concern.

Thank you to parents/caregivers who are using parking zones correctly before/after school - by pulling up, dropping off and leaving immediately. This avoids any congestion/safety issues.

In a 'Kiss and drop' zone:

- The zone is for the drop off or collection of passengers only.
- Vehicles must not be in these areas for more than 2 minutes.
- Drivers must not leave a vehicle unattended in these zones.

If your child is not waiting when you arrive to collect them, drive off and leave the zone free for parents/caregivers whose child is waiting.

Everyone's patience is appreciated during these peak times when space is hard to find. We ask that parents/caregivers park within the lines and, in the afternoons, refrain from using the drop-off zone as a park/stop for an extended time.

Remember too, that double parking/angle parking is illegal and unsafe and that local residents need to be able to have safe and unrestricted access to their properties.

For safety reasons, parents/caregivers should not use staff car parks. For their safety students need to use the paths and small access gates and not walk through the car parks.

Please remember that our Disability Car Parks located in the school grounds means there is to be NO pedestrian ACCESS in this area, as cars need to have clear space to reverse out. Parking in the Disability Parks is by permit holders only.

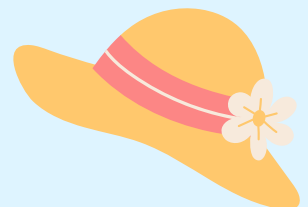
From time to time our local Council does send out Parking Inspectors and parking inappropriately can be a costly mistake.

Welcome to our Pre- Service teachers and Social work students we hope you enjoy your time with us at Hub Primary School.

HAT REMINDER

A reminder that it is compulsory to wear school hats when outside during Term 1.

Sarah Magnusson
Principal





**RELATIONSHIPS
RESPONSIBILITY
RESILIENCE
RESPECT**

general reminders

SCHOOL FEES

Materials and Service Charge

Tax Invoices for the 2024 Materials and Services Charge will be distributed to families (via class teachers to students). The package includes an invoice, an information letter and an agreement form for payment by instalments. Payments by instalments form is optional for those who prefer to pay in smaller amounts. Please contact us if you do not receive the package from your child or if you'd like to speak to us regarding payment plans/difficulties.

Families who still have outstanding fees for 2023 will soon receive soon a Final Notice. *The fees are legally recoverable and will be forward to the Dept. for Education Debt Recovery Unit.*

Please note: A new school card application must be submitted every year.

School Card Online Facility

2024 School Card applications can be submitted online using the link below or paper copies are available from Front Office. School Card information is available at:

<http://www.sa.gov.au/topics/education-and-learning/financial-help-scholarships-and-grants/school-card-scheme> .

Income eligibility limits for school card approval can be found in the 2024 information letter/invoice or via the above link.

Chris Godden
Business Manager

From the desk of the Deputy Principal

To Parents and Caregivers,

Welcome to the 2024 new school year. I hope you all had a safe and happy school holiday break.

It was great to spend some time with all the classes in week 1, together with Mrs Magnusson and Mr Walters, and being able to check in with all the students after their holiday break and revisit our school Values.

Although the start of a new school year can be difficult for some students, it has been great to see so many students showing great Resilience as they adjust to possibly being in a new classroom with a new teacher and new peers. With many new families joining the Hub community this year, its has also been great to see lots of students thinking about another school value, Relationships, as they show kindness and acceptance to any new students they may have in their class.

I am excited to once again be part of the Hub community as the Deputy Principal and I am looking forward to another successful year full of great student growth and achievements.

Kind regards,

Amanda Allen
Deputy Principal



Aberfoyle Hub Primary School, is a Sunsmart School

SLIP, SLOP, SLAP SEEK AND SLIDE

Protect your skin when **UV is 3 and above...**



As we enter Term 1, the UV Index is creeping higher and higher remaining at 3 or above later into the day. This means that sun protection is required after school as well as during the school day, which is particularly important for OSHC services across South Australia. Being SunSmart is everyone's responsibility, so look out for your children, students, colleagues, and peers this term by reminding each other to slip, slop, slap, seek and slide.






TESTING AND ISOLATING FOR SCHOOL AND OSHC SETTINGS

FROM JULY 2023



IF A STUDENT OR STAFF MEMBER TESTS POSITIVE FOR COVID-19 THEY MUST NOTIFY THE SCHOOL AND/OR OSHC. PLEASE DO NOT ATTEND FOR 5 DAYS IF COVID-19 POSITIVE. DO NOT ATTEND WHILE SYMPTOMATIC.

CONTACT DEFINITIONS AND REQUIREMENTS

Student Students attending the site and undertaking learning activities 	Teacher or school services officer in classroom settings People working in classroom and/or OSHC settings (teachers, AEWs, SSOs) 	Student support in 1:1 settings People working 1:1 with students (eg SSOs, disability support, allied health workers) 	Ancillary staff and contractors Administrative positions with limited student/child contact, ground keeping etc. 
A STUDENT IS A CLOSE CONTACT IF:	YOU ARE A CLOSE CONTACT IF:	YOU ARE A CLOSE CONTACT IF:	YOU ARE A CLOSE CONTACT IF:
<ul style="list-style-type: none"> they were supported by an SSO or teacher who has tested positive for COVID-19, for a cumulative period of 4 hours, indoors, in close physical proximity and face masks were not worn. 	<ul style="list-style-type: none"> you spend a cumulative period of 4 hours indoors, in close physical proximity and not wearing a mask with <u>another adult</u> who has tested positive for COVID-19 	<ul style="list-style-type: none"> you supported a student or child who has tested positive for COVID-19, for a cumulative period of 4 hours, indoors, in close physical proximity and face masks were not worn you spent a cumulative period of 4 hours indoors, in close physical proximity and not wearing a mask with <u>another adult</u> who has tested positive for COVID-19 	<ul style="list-style-type: none"> you spend a cumulative period of 4 hours indoors, in close physical proximity and not wearing a mask with <u>another adult</u> who has tested positive for COVID-19
STUDENTS ARE REQUIRED TO:	YOU ARE REQUIRED TO:	YOU ARE REQUIRED TO:	YOU ARE REQUIRED TO:
<ul style="list-style-type: none"> undertake 5 rapid antigen tests over a 7-day period following exposure*^a 	<ul style="list-style-type: none"> undertake 5 rapid antigen tests over a 7-day period following exposure*^a 	<ul style="list-style-type: none"> undertake 5 rapid antigen tests over a 7-day period following exposure*^a 	<ul style="list-style-type: none"> undertake 5 rapid antigen tests over a 7-day period following exposure*^a
 STAFF OR STUDENTS WHO HAVE BEEN RECOMMENDED TO UNDERTAKE RAT TESTING OR WHERE THEIR CLASS/ROOM/YEAR LEVEL HAS BEEN TEMPORARILY CLOSED AS A CIRCUIT BREAKER IN THE PAST WEEK, SA HEALTH ADVICE IS TO DO THE FOLLOWING FOR 7 DAYS:		<ul style="list-style-type: none"> avoid working across workspaces unless an approved risk management plan is in place (eg rapid antigen testing) avoid contact with vulnerable people outside of your workplace or family, where possible avoid non-essential activities where possible (eg where there are lots of people, inside, in close contact) avoid shared spaces and maintain physical distance. 	

*Students and staff who are COVID-19 positive or are a close contact cannot attend an overnight camp during the 7-day period following testing positive or following exposure.

^a People who have recovered from COVID-19 will not be considered a close contact for 28 days after testing positive.

COMMUNITY NEWS



SOUTHERN VALLEY SAPSASA **Facebook Page**



Your child attends a school that is a part of the SOUTHERN VALLEY SAPSASA District. Sapsasa – Primary School Sport, provides students with opportunities to compete in their chosen sport by representing their school, the District or their State.

Students who are in years 5 and 6 have opportunities to compete in all common sports. There are also opportunities for all students born in 2014 and older to compete in Swimming, Cross Country and Athletics events.

All information for the District is distributed to students through your school Sapsasa representative (Brad Walters) and will also be posted on our Facebook Page (Southern Valley SAPSASA DISTRICT) if you would like to keep up to date with all Southern Valley Sapsasa information, please click on "JOIN GROUP". If you have any questions, please contact me at jonathan.grant806@schools.sa.edu.au

Jonathan Grant
Southern Valley District Convenor
Braeview Primary School



Aberfoyle Hub Primary School

29 JEANETTE CRESCENT, ABERFOYLE PARK SA 5159

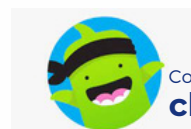
www.ahs@schools.sa.edu.au
dl.0536.info@schools.sa.edu.au



Government of South Australia
Department for Education



Follow us on Facebook
facebook.com/AberfoyleHubR7school



Connect with the classroom on
class dojo