



HUB NEWS

Aberfoyle Hub Primary School Parent and Caregiver Newsletter

RELATIONSHIPS RESPONSIBILITY RESILIENCE RESPECT



What's inside this issue:

From the Principal - page 1

From the Deputy Principal - page 2

Finance News - page 3

Resource News- page 4

OHSC-page 5



From the Principal by Sarah Magnusson

Dear Parents/Caregivers,

WELCOME NEW RECEPTIONS

A special welcome to the students who began their first year of schooling last week in Unit 4, Rooms 14 & 16. They have quickly settled into the routines of school life. We look forward to welcoming them and other new students to the Hub at our next Assembly, Friday 3rd August.

STAFFING NEWS

We welcome Laura Sprigg – teaching in Rm 6 for the remainder of the year whilst Marina Hachem has taken maternity leave.

Welcome back Mr Knick who returned this week from leave. Thank you to our regular reliever Skye Jeffrey for her ongoing flexibility and availability to teach across all year levels at the Hub.

We sadly farewell Josh Maxwell-Davis who has supported our students this past year. We wish him well in his new role working with children.

Welcome new ancillary staff Sue Hixson and Amna Kashif who will be supporting our students at the Hub.

SCHOOL VALUES

Our focus for this term is respect.

PARENT SURVEY

All parents and carers have been invited, via email or SMS, to participate in the annual Department for Education Parent Survey.

The survey closes midnight Sunday 8th September (week 7, term 3).

The survey aims to measure the level of engagement at the Hub. It will help us to understand what we are doing well, where we can improve and what's important to you.

I encourage all parents and caregivers to please complete the survey. We value your feedback.

NAPLAN

Parents and carers of students in Years 3 and 5 who took this year's NAPLAN assessment in March will soon receive an individual student report of their child's results from school. NAPLAN shows how students are going all over Australia.

These reports provide useful information on a student's results in reading, writing, conventions of language (spelling, grammar and punctuation) and numeracy.

NAPLAN individual student reports are reported against four proficiency standards – exceeding, strong, developing and needs additional support. The standards are set at a challenging but reasonable expectation of what students know and can do at the time of testing.

Along with other school assessment reports, parents and carers can use the NAPLAN individual student reports to discuss their child's progress with their teacher.

PASTORAL CARE WORKER

Celebrating 1 year of Joy being a part of our school community. In this time Joy has quickly settled into the Hub supporting all our students and families.

Joy is currently on leave and will be returning in week 7 to support our community.

Joy's availability at the Hub will be Wednesday, Thursday and Friday's.

Ngaityalya (Kurna, thank you)

Kind Regards,



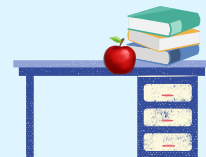
Sarah Magnusson
Principal

*High expectations
United communities
and
Building bright
futures together.*

save the date



From the desk of the Deputy Principal



AUGUST/SEPTEMBER

Week 2

Friday 2nd August

Rm 19/21 Science Alive excursion

Week 3

Thursday 8th August

SAPSASA Basketball

Friday 9th August

Pupil Free Day

reminder

Week 5

Monday 19th August

Grand Parents/Special Friend's Day

Book Week Parade

Week 6

Tuesday 27th August

Father's Day Stall

Week 7

Monday 2nd September

School Closure Day



Change of details

Please advise the Front Office of any change of address or contact details (including emergency contacts).

Absences

The Front Office can be notified of any student absences by phoning 8270 5055 or sending a text to **0428 910 895**



Dear Parents/ Caregiver,

ATTENDANCE IS IMPORTANT

A friendly reminder if your child is absent for the day to please send a quick Dojo message to your child's class teacher, admin text or call the school to notify the absence.

You only need to give a brief reason so that we can be accurate with our attendance records at reporting time.

Did you know that if your child is missing:

- 10mins per day = 50 mins per week which is nearly 1.5 weeks per year.
- 20mins per day = 1 hour and 40mins per week which is over 2.5 weeks per year.
- 1/2hr per day = 1/2hr a day per week which is 4 weeks per year.
- 1 hour per day = 1 day per week which is 8 weeks per year.

HAVING A GOOD BREAKFAST IS IMPORTANT.

Here are some different healthy breakfast ideas:

- fruit and yoghurt smoothie
- apple muffins
- bacon and eggs
- avocado toast
- pizza pitas
- egg muffins

Remember that the Hub Breakfast Club is open to all students every Wednesday and Friday mornings before school 8.30am - 8.50am.

DROP OFF AND PICK UP

The safety of our students is always of paramount concern.

Thank you to parents/caregivers who are using parking zones correctly before/after school - by pulling up, dropping off and leaving immediately. This avoids any congestion/safety issues. For safety reasons, parents/caregivers should not use staff car parks. For their safety students need to use the paths and small access gates and not walk through the car parks. A reminder that the school grounds and areas immediately surrounding school access points are Smoke and Vape Free zones.

LOST PROPERTY

There is an abundance of lost property (named and unnamed) accumulating around the school. Please check the lost property bins near the Multi-Purpose room for any missing items.

SLIP, SLOP, SLAP SEEK AND SLIDE

Aberfoyle Hub Primary School, is a SunSmart school. As per our Sun Smart Policy this term we wear hats when outside .

Ngaityalya (Kurna, thank you)

Kind Regards,



Amanda Allen
Deputy Principal



SLIP



SLOP



SLAP



SEEK



SLIDE



RELATIONSHIPS RESPONSIBILITY RESILIENCE RESPECT

RECEPTION 2025

Enrolment offers for Receptions starting school term 1, 2025 have been emailed to families in week 2.

YEAR 6- High School enrolment offers

All year 6 families will be sent an email from the Department in week 3 (5th-8th August) regarding High School enrolment offers for 2025.

If you have not received this email or you are having difficulty with any of the above, please contact the Front Office on 8270 5055 for assistance.

Thank you,

Cathrine
Front Office

SCHOOL UNIFORM EXPECTATION

A reminder that all students are expected to be in school uniform when at school. We strongly encourage all families to support the school in ensuring students attend in full school uniform colours - plain navy blue, light blue and white.



Finance News

SCHOOL FEES

Thank you to the many families who have paid in full, applied for school card, or organized payment plans for this year's fees. Statements will be sent out.

If you have fees outstanding, please organize payment or a payment plan as soon as possible.

Please note: A new school card application must be submitted every year.

School Card Online Facility

2024 School Card applications can be submitted online using the link below or paper copies are available from Front Office. School Card information is available at:

<http://www.sa.gov.au/topics/education-and-learning/financial-help-scholarships-and-grants/school-card-scheme>.

Income eligibility limits for school card approval can be found in the 2024 information letter/invoice or via the above link.

Ngaityalya (Kurna, thank you) and kind regards,



Chris Godden
Business Manager



HUB PLAYGROUP 2024

Term 3

Fridays - Weeks 1 - 9 (except week 3)
Aberfoyle Hub Pre-School, Taylors Rd.

Time: 9am - 10.30am
Come and play with your child.

Cost: \$40 for the term (\$5 per session).

Hub Staff Kate Videon delivering the programme with either Sarah Magnusson/Amanda Allen supporting and the occasional Hub Preschool Director Maddie attending.



CONGRATULATIONS!

Congratulations to Emily H, Isabel S and Owen T from Rm 19 who received Honorable Mention certificates for their entries in the National Pharmacies Christmas Pageant Mini Float competition, which were awarded to the Top 20 runners up out of over 400 entries. Congratulations to them!



Brad Edwards
Year 5/6 Teacher
Health & Safety Rep
AEUSA Sub-Branch Secretary

Christmas Pageant Mini-Float Design Name: Owen 5/17/2012

What is the name of your Mini-Float?
 A worm taking to an Aussie Christmas

What is the theme of your Mini-Float?
 Australian & Christmas

Who are the characters around the Mini-Float and what will they be wearing?
 The characters will be wearing a space costume

What music would you recommend to soundtrack your Mini-Float?
 A mix of Christmas music and classical music

What is your favourite Christmas Pageant float and why?
 My favourite float was the galaxy 2000 float because it has starburst lights

Handwritten notes on drawing: "A worm with me taking out of a space costume by presents", "Side view", "costume space bottle", "you could use his color design or use the color costume from a store space bottle"

Christmas Pageant Mini-Float Design Name: Isabel Stanley

What is the name of your Mini-Float?
 Surprised by Christmas tangerine

What is the theme of your Mini-Float?
 The theme of my mini float is Aussie animals and Christmas

Who are the characters around the Mini-Float and what will they be wearing?
 The characters around my mini float are going to be people dressed as other Australian animals like kangaroos and more.

What music would you recommend to soundtrack your Mini-Float?
 Classic Christmas music.

What is your favourite Christmas Pageant float and why?
 My favourite float is Bruno because it hugs people in his arms!

Handwritten notes on drawing: "The characters around my mini float are going to be people dressed as other Australian animals like kangaroos and more."

Christmas Pageant Mini-Float Design Name: Emily Hallitt

What is the name of your Mini-Float?
 Princess Presents

What is the theme of your Mini-Float?
 Christmas day in a royal family

Who are the characters around the Mini-Float and what will they be wearing?
 The characters are royal families wearing royal clothes with crowns on their heads and the British royal family just a royal family

What music would you recommend to soundtrack your Mini-Float?
 Classical Christmas music

What is your favourite Christmas Pageant float and why?
 My favourite float is the Christmas tree because it's cute and simple.

Handwritten notes on drawing: "Point and look visual", "Crown colors", "Big eyes", "It's small", "Can a mini float?"

RESOURCE CENTRE NEWS

BOOK WEEK PARADE

19/08/2024

9.00am in the Court yard



**RELATIONSHIPS
RESPONSIBILITY
RESILIENCE
RESPECT**



**OSHC
NEWS**



From Sam Tuff the OSHC Director



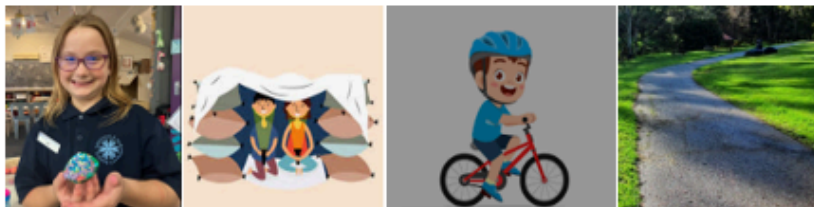
**ABERFOYLE HUB OSHC
PUPIL FREE DAY**

Friday 9th of August 2024



WHEELS DAY

BRING YOUR WHEELS & HELMETS FOR A SPIN WITH US THIS PUPIL FREE DAY. WE'LL ZOOM AROUND THE SCHOOL THEN CHILL WITH SOME GAMES, COOKING AND FORT BUILDING FUN. MAYBE A VISIT TO THALASSA.



YOU WILL NEED TO BRING YOUR RECESS, LUNCH AND DRINK BOTTLE IF NOT ORDERING FROM BELOW

Notice of interest: to order a Hot Dog lunch order for your child from our canteen, consisting of a Hot Dog, a milk or juice & a choc chip muffin. This will be provided by OSHC.

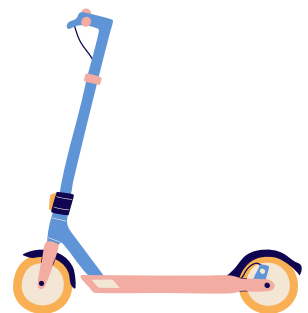
Please note we need 30 orders for this to be available.

Contact OSHC staff to secure your booking by 6:30 pm

Friday the 2nd of August 2024.

Mobile Ph: 0401 161 644 Or Email: dl.0536.oshc@schools.sa.edu.au.

PLEASE NOTE: A minimum of 15 bookings of attendance is required for OSHC to open.



Aberfoyle Hub Primary School

29 JEANETTE CRESCENT, ABERFOYLE PARK SA 5159

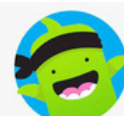
**www.ahs@schools.sa.edu.au
dl.0536.info@schools.sa.edu.au**



**Government of South Australia
Department for Education**



**Follow us on Facebook
facebook.com/AberfoyleHubR7school**



**Connect with the classroom on
class dojo**